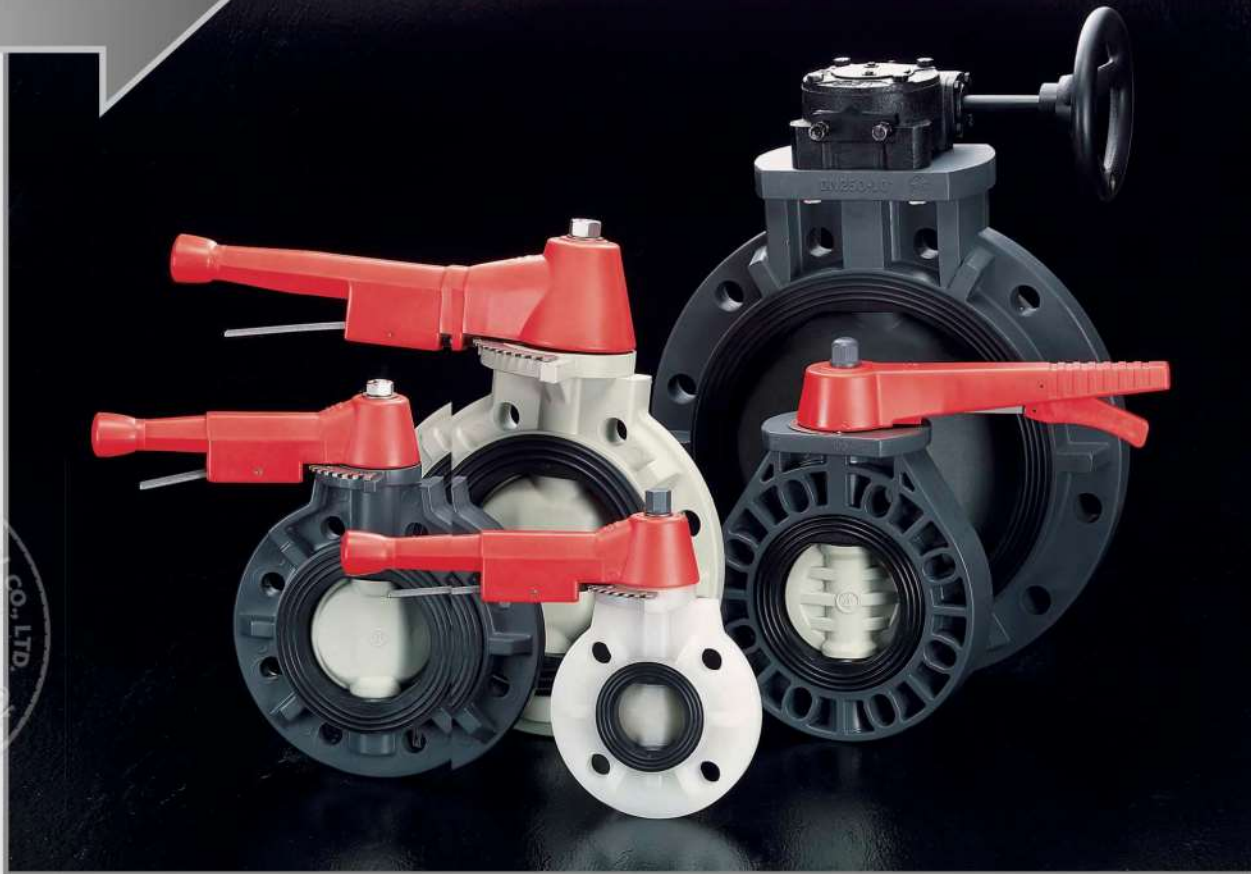




Butterfly Valve

Hi -Tech'S, Hi-Quality'S

- Material: UPVC, PP, CPVC, PPG, PVDF
- Size: 2"~24"



Tel: 886-4-2926 8926 Fax: 886-4-2926 7188 E-mail: shieyu@shieyu.com.tw Http://www.shieyu.com.tw



SUPER LARGE SIZED BUTTERFLY VALVE



BS Series

BS300

Size: Ø700(28") ~ Ø1200(48")

MATERIAL: UPVC, PP, CPVC, PPG, PVDF

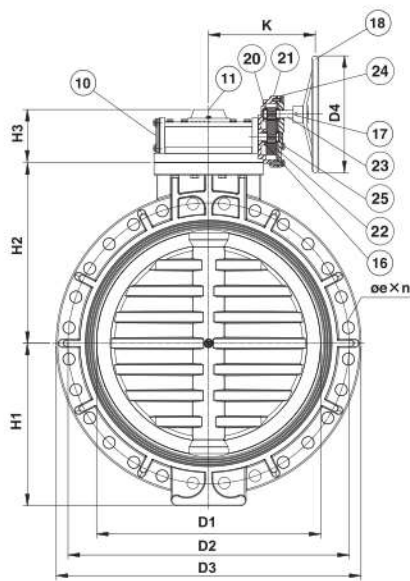
**MODEL: Gear operated type · Chaining type
Hydraulic type · Pneumatic type**

FEATURES:

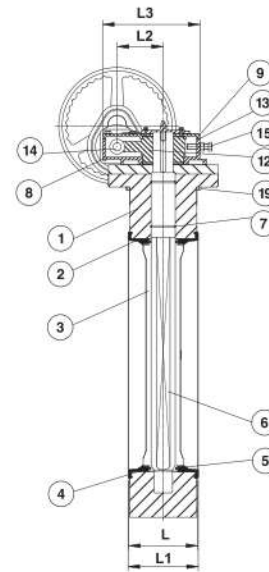
- Fullport allowing max. fluid flow.
- ECONOMIC EQUIPMENT: Fluid control plate consealed in piping system, space saved.
- EASY OPERATION-90° open and close, long duration.
- WIDE APPLICATION RANGE-Acid & alk all resistance, anti-corrosion, and suitable for fluid and air use.

● MATERIALS OF CONSTRUCTION

No.	Parts	Pcs.	Materials	No.	Parts	Pcs.	Materials
1	Body	1	PP, PPG	14	Bearing	1	STEEL
2	Seat	1	EPDM, VITON, NBR, HYPALON	15	Adjustable Bolt	2	STEEL
3	Disc	1	UPVC, PP, CPVC, PPG, PVDF	16	WORM SHAFT	1	STEEL
4	Disc O'ring(A)	2	EPDM, VITON	17	Set Pin	1	K7
5	Disc O'ring(B)	2	EPDM, VITON	18	Hand Wheel	1	CAST IRON
6	Stem	1	SUS410, SUS304, SUS316	19	Tightening Bolt	4	SUS304
7	Stem O'ring	2	EPDM, VITON	20	Bearing	4	COPPER
8	Gear Box	1	CAST IRON	21	SPUR GEAR BODY	1	CAST IRON
9	Gear Box Cap	1	CAST IRON	22	SPUR GEAR	1	STEEL
10	Side Cap	1	CAST IRON	23	SPUR GEAR SHAFT	1	STEEL
11	Indicator Plate	1	CAST IRON	24	SPUR GEAR COVER	1	CAST IRON
12	Gear	1	DUCTILE IRON	25	BOLT	6	STEEL
13	Oil Seal	1	EPDM				



DN700~DN1200



● TORQUE VALUES (1Kgf/m=9.8 N.m)

BF-V'S Size	700(28")	800(32")	900(36")	1000(40")	1200(48")
Torque Under Without Any Water Pressure (Kgf/m)	4480	5850	7400	10300	10300

● DIMENSIONS TABLE

JIS														Unit: mm	
Nom. size DN(inch)	D1	D2	D3	n	e	H1	H2	H3	K	D4	L	L1	Test Press (kgf/cm ²)	Working Press (kgf/cm ²)	
700(28")	680	840	942	24	33	498	563	138	325	356	203	210	4	3	
800(32")	780	950	1068	28	33	503	630	132	372	406	241	248	4	3	
900(36")	870	1050	1185	28	33	621	694	132	372	406	241	248	4	3	
1000(40")	970	1160	1290	28	39	683	762	210	471	508	300	307	4	3	
1200(48")	1170	1380	1512	32	39	776	876	210	471	508	300	307	3	2	

ANSI														Unit: inch	
Nom. size DN(inch)	D1	D2	D3	n	e	H1	H2	H3	K	D4	L	L1	Test Press (lb/in ²)	Working Press (lb/in ²)	
700(28")	26.77	33.99	37.09	24	1.37	19.60	22.17	5.40	12.57	14.02	7.99	8.26	60	45	
800(32")	30.70	38.50	42.05	24	1.61	19.80	24.80	5.18	14.59	15.98	9.48	9.76	60	45	
900(36")	34.25	42.75	46.65	32	1.62	24.45	27.32	5.18	14.59	15.98	9.48	9.76	60	45	
1000(40")	38.18	46.25	50.88	32	1.62	26.89	30.00	8.27	18.54	20	11.81	12.08	60	45	
1200(48")	46.06	56.00	59.52	44	1.62	30.55	34.48	8.27	18.54	20	11.81	12.08	45	30	

DIN														Unit: mm	
Nom. size DN(inch)	D1	D2	D3	n	e	H1	H2	H3	K	D4	L	L1	Test Press (bar)	Working Press (bar)	
700(28")	680	840	942	24	30	498	563	138	325	356	203	210	4	3	
800(32")	780	950	1068	24	33	503	630	132	372	406	241	248	4	3	
900(36")	870	1050	1185	28	33	621	694	132	372	406	241	248	4	3	
1000(40")	970	1175	1290	28	36	683	762	210	471	508	300	307	4	3	
1200(48")	1170	1380	1512	32	39	776	876	210	471	508	300	307	3	2	

※ Standard dimensions based on PP material.
 The flanged length tolerance is according to EN558-1:1995.
 ※ L: The suggested length of the valve as installed on pipeline.



BUTTERFLY VALVE

Lever handle type

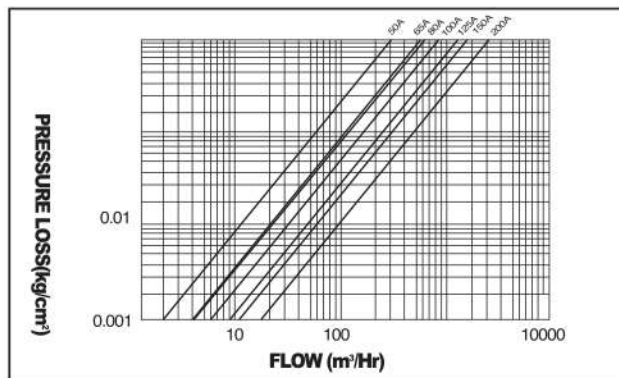
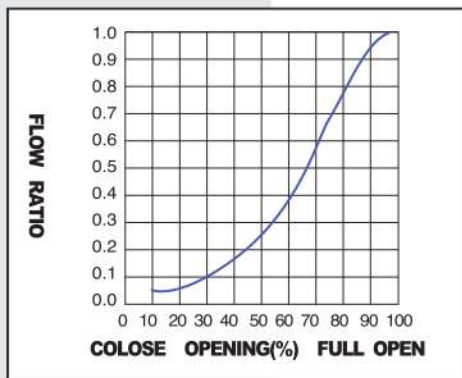


BB Series

BB300

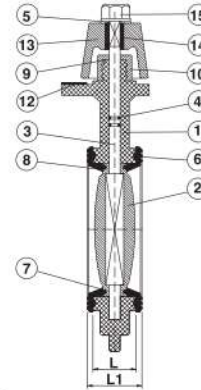
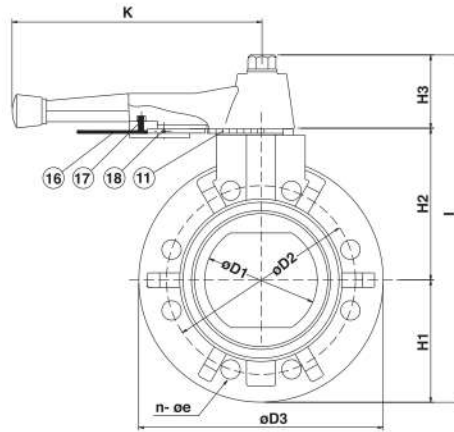
Size: 2" - 8"

options: 8"(DN200) GEAR OPERATOR TYPE



MATERIALS OF CONSTRUCTION

No.	Parts	Pcs.	Materials	No.	Parts	Pcs.	Materials
1	Body	1	UPVC, PP, PPG, PVDF, CPVC	10	Retainer Cap	1	UPVC, PP, PVDF
2	Disc	1	UPVC, PP, PPG, PVDF, CPVC	11	Positioner	1	SUS304
3	Stem	1	SUS410, SUS316, SUS304	12	Screw	3_DN50-200 4_DN200	SUS304
4	Stem O-ring	2	EPDM, VITON	13	Handle	1	ABS
5	Washer	1	SUS304	14	Inserted Metal Of Handle	1	FC0208
6	Seat	1	EPDM, VITON, NBR, HYPALON	15	Nut	1	PVC COATED BRASS, SUS304
7	Disc O'ring(1)	2	EPDM, VITON	16	Handle Lever	1	SUS304
8	Disc O'ring(2)	2	EPDM, VITON	17	Spring	1	SUS304
9	Stem Retainer	1	SUS304	18	Set Pin	1	B5BM



DN50~DN200

● TORQUE VALUES (1kgf/m=9.8N.m)

BF-V'S Size	Torque Under Without Any Water Pressure (Kgfm)	Under Water Testing Pressure(Kg/cm ²)			BF-V'S Size	Torque Under Without Any Water Pressure (Kgfm)	Under Water Testing Pressure(Kg/cm ²)		
		Water Pressure(Kg/cm ²)	Open Torque(Kgfm)	Close Torque(Kgfm)			Water Pressure(Kg/cm ²)	Open Torque(Kgfm)	Close Torque(Kgfm)
2"	1.5	15	0.5	0.5	10"	17.0	8	7	10
2-1/2"	1.5	15	0.5	0.5	12"	27.0	6	14	18
3"	2.0	15	1	1.5	14"	37.0	6	25	28
4"	2.0	12	1	1.5	16"	42.0	-	-	-
5"	5.0	12	2.5	4.5	18"	52.0	-	-	-
6"	6.5	12	4	7	20"	65.0	-	-	-
8"	10.0	10	6	8.5	24"	76.0	-	-	-

● DIMENSIONS TABLE

JIS														Unit: mm		
Nom. Size DN(inch)	D1	D2	D3	øe	n	L	L1	H1	H2	H3	I	K	Test Press (kgf/cm ²)		Working Press. (kgf/cm ²)	
													Body	Seat		
50(2")	57	120	165	19	4	36.5	40.5	82.5	102	63	253	220	15.0	12.0	10.0	
65(2-1/2")	72	140	184	19	4	40.5	44.5	92	110	63	270	220	15.0	12.0	10.0	
80(3")	80	150	200	19	8	40.5	44.5	100	118	63	286	220	15.0	12.0	10.0	
100(4")	100	175	230	19	8	50.5	56.5	115	134	63	312	220	15.0	12.0	10.0	
125(5")	130	210	256	23	8	60.5	66.5	128	160	96	391	310	15.0	12.0	10.0	
150(6")	150	240	288	23	8	66	71	144	177	96	418	310	15.0	12.0	10.0	
200(8")	203	290	348	23	12	82	87	174	204	93	476	414	15.0	12.0	10.0	

ANSI														Unit: inch		
Nom. Size DN(inch)	D1	D2	D3	øe	n	L	L1	H1	H2	H3	I	K	Test Press (lb/in ²)		Working Press (lb/in ²)	
													Body	Seat		
50(2")	2.24	4.75	6.50	0.75	4	1.44	1.59	3.25	4.01	2.48	9.96	8.66	235	180	150	
65(2-1/2")	2.83	5.50	7.24	0.75	4	1.59	1.75	3.62	4.33	2.48	10.63	8.66	235	180	150	
80(3")	3.15	6.00	7.87	0.75	4	1.59	1.75	3.94	4.64	2.48	11.26	8.66	235	180	150	
100(4")	3.93	7.50	9.06	0.75	8	1.99	2.22	4.53	5.28	2.48	12.48	8.66	235	180	150	
125(5")	5.12	8.50	10.07	0.87	8	2.38	2.62	5.00	6.30	3.78	15	12.20	235	180	150	
150(6")	5.90	9.50	11.34	0.87	8	2.60	2.80	5.67	6.97	3.78	16.46	12.20	235	180	150	
200(8")	7.99	11.75	13.70	0.87	8	3.23	3.43	6.85	8.03	3.66	18.74	16.30	235	180	150	

DIN														Unit: mm		
Nom. Size DN(inch)	D1	D2	D3	øe	n	L	L1	H1	H2	H3	I	K	Test Press (bar)		Working Press (bar)	
													Body	Seat		
50(2")	57	125	165	18	4	36.5	40.5	82.5	102	63	253	220	15.0	12.0	10.0	
65(2-1/2")	72	145	184	18	4	40.5	44.5	92	110	63	270	220	15.0	12.0	10.0	
80(3")	80	160	200	18	8	40.5	44.5	100	118	63	286	220	15.0	12.0	10.0	
100(4")	100	180	230	18	8	50.5	56.5	115	134	63	312	220	15.0	12.0	10.0	
125(5")	130	210	256	18	8	60.5	66.5	128	160	96	391	310	15.0	12.0	10.0	
150(6")	150	240	288	23	8	66	71	144	177	96	418	310	15.0	12.0	10.0	
200(8")	203	295	348	23	8	82	87	174	204	93	476	414	15.0	12.0	10.0	

✘ Standard dimensions based on PVC material.
 ✘ The flanged length tolerance is according to EN558-1:1995.
 ✘ L: The suggested length of the valve as installed on pipeline.



BUTTERFLY VALVE-Universal Type (With actuator direct mounting pad) Lever Handle Type



BE Series

BE300

Size: 2" - 8"

End Type: Flanged

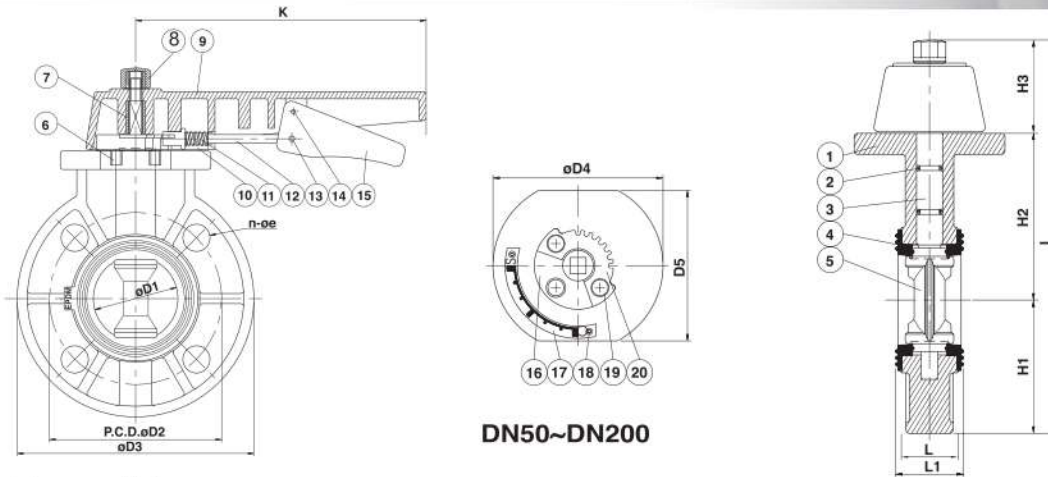
Test Pressure: 225 PSI

Working Pressure: 150 PSI

- Corrosion resistance.
- Excellent flow characteristics.
- Lower flow loss.
- Compact and lightweight designs in an energy-saving and cost-efficient Butterfly Valve.
- With clear indication of disc opening degree.
- Ideally suited for flow control in a minimum piping space.

● MATERIALS OF CONSTRUCTION

No.	Parts	Pcs	Materials	No.	Parts	Pcs	Materials
1	Body	1	UPVC, PP, CPVC, PVDF	11	Spring	1	SUS 304
2	Stem O'ring	2	EPDM, VITON	12	Lever	1	SUS 304
3	Stem	1	SUS 410, SUS 316	13	Setpin(Short)	1	SUS 304
4	Seat	1	EPDM, VITON, NBR	14	Setpin(Long)	1	SUS 304
5	Disc	1	UPVC, PP, CPVC, PVDF	15	Lever	1	ABS
6	Bolt	1	BRASS, SUS 304	16	Positioner	1	UPVC
7	Handle Insert	1	FC 0208	17	Indicator	1	SUS 304
8	Stem Bolt	1	UPVC, BRASS	18	Bolt	2	SUS 304
9	Handle	1	ABS	19	Bolt	3	SUS 304
10	Handle Cap	1	ABS	20	Teeth Plate	1	SUS 304



DN50~DN200

● The Torque Values

	AT Water							
	W/O Pressure (Kgf.m)		Pressure at 50PSI (Kgf.m)		Pressure at 100PSI (Kgf.m)		Pressure at 150PSI (Kgf.m)	
	Open	Close	Open	Close	Open	Close	Open	Close
2"	0.80	0.80	0.80	1.00	0.80	1.00	1.00	1.00
3"	2.50	2.50	3.00	3.00	2.50	2.50	3.00	3.00
4"	2.50	3.00	3.00	3.00	3.00	3.00	3.00	3.00
6"	8.00	9.00	8.00	8.00	7.50	8.00	6.00	7.00
8"	10.00	11.00	11.00	11.00	10.50	10.50	9.50	9.50

● DIMENSIONS TABLE

Nom. size DN(inch)	JIS													Unit: mm		
	D1	D2	D3	n	L	L1	D4	H1	H2	H3	I	K	D5	Test Press (kgf/cm ²) Body	Test Press (kgf/cm ²) Seat	Working Press (kgf/cm ²)
40(1-1/2")	44	105	149	4	36.1	43.5	105	73	98	63	234	202	93	15	12	10
50(2")	55	120	164	4	36.1	43.5	105	82.0	107	63	252	202	93	15	12	10
65(2-1/2")	69.6	140	185	4	40	46.4	105	92	115	63	270	202	95.5	15	12	10
80(3")	78	150	196	8	40	47.4	127	98	123	63	284	202	95	15	12	10
100(4")	100	175	225	8	48	52.4	134	112.5	139.5	68	320	253	100	15	12	10
125(5")	128	210	254	8	51.2	58.8	169.5	127	160	86	373	297	100.8	15	12	10
150(6")	152	240	286	8	51	57	170	143	178	86	407	297	101	15	12	10
200(8")	200	290	344	12	61	67.5	191	172	212	86	470	297	110	15	12	10

Nom. size DN(inch)	ANSI													Unit: inch		
	D1	D2	D3	n	L	L1	D4	H1	H2	H3	I	K	D5	Test Press (lb/in ²) Body	Test Press (lb/in ²) Seat	Working Press (lb/in ²)
40(1-1/2")	1.73	3.88	5.87	4	1.42	1.71	4.13	2.87	3.86	2.48	9.21	7.95	3.66	235	180	150
50(2")	2.16	4.75	6.46	4	1.42	1.71	4.13	3.23	4.21	2.48	9.92	7.95	3.66	235	180	150
65(2-1/2")	2.74	5.5	7.28	4	1.57	1.83	5.04	3.62	4.53	2.48	10.63	7.95	3.76	235	180	150
80(3")	3.07	6.0	7.72	4	1.57	1.87	5.00	3.86	4.84	2.48	11.18	7.95	3.74	235	180	150
100(4")	3.94	7.5	8.85	8	1.89	2.06	5.27	4.43	5.49	2.68	12.60	9.96	3.94	235	180	150
125(5")	5.04	8.5	10.0	8	2.02	2.31	6.673	5.00	6.30	3.39	14.69	11.69	3.97	235	180	150
150(6")	5.98	9.5	11.26	8	2.01	2.24	6.69	5.63	7.00	3.39	16.02	11.69	3.98	235	180	150
200(8")	7.87	11.75	13.54	8	2.40	2.66	7.52	6.77	8.35	3.39	18.5	11.69	4.31	235	180	150

Nom. size DN(inch)	DIN													Unit: mm		
	D1	D2	D3	n	L	L1	D4	H1	H2	H3	I	K	D5	Test Press (bar) Body	Test Press (bar) Seat	Working Press (bar)
40(1-1/2")	44	110	149	4	36.1	43.5	105	73	98	63	234	202	93	15	12	10
50(2")	55	125	164	4	36.1	43.5	105	82.0	107	63	252	202	93	15	12	10
65(2-1/2")	69.6	145	185	4	40	46.4	128	92	115	63	270	202	95.5	15	12	10
80(3")	78	160	196	8	40	47.4	127	98	123	63	284	202	95	15	12	10
100(4")	100	180	225	8	48	52.4	134	112.5	139.5	68	320	253	100	15	12	10
125(5")	128	210	254	8	51.2	58.8	169.5	127	160	86	373	297	100.8	15	12	10
150(6")	152	240	286	8	51	57	170	143	178	86	407	297	101	15	12	10
200(8")	200	295	344	8	61	67.5	191	172	212	86	470	297	110	15	12	10

※ Standard dimensions based on PVC material.
 ※ The flanged length tolerance is according to EN558-1:1995.
 ※ L: The suggested length of the valve as installed on pipeline.



BUTTERFLY VALVE GEAR OPER. FULL FLANGED TYPE



BH Series

BH 300 Size: 2" - 8"

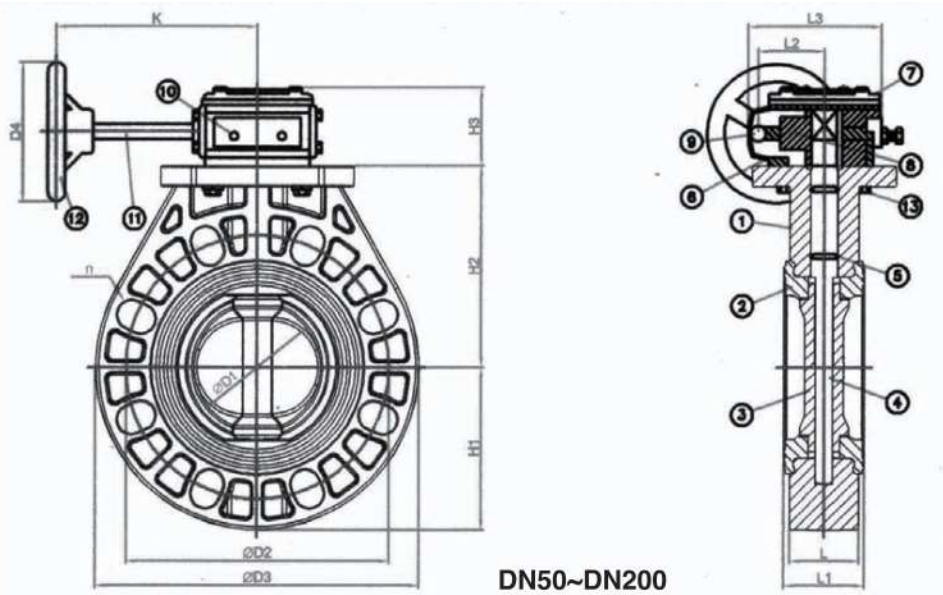
*OPTION: 2"~8"(DN200)Lever type.

MATERIALS OF CONSTRUCTION

No.	Parts	Pcs.	Materials	No.	Parts	Pcs.	Materials
1	Body	1	UPVC,CPVC,PP,PVDF	8	Worm Gear	1	FCD450
2	Seat	1	EPDM,VITON,NBR	9	Bearing	1	SMCM220/420/810
3	Disc	1	UPVC,CPVC,PP,PVDF	10	Adjustable Bolt	2	SUS304
4	Stem	1	SUS410,SUS316,SUS304	11	Worm Shaft	1	S45C
5	Stem O'ring	2	EPDM,VITON	12	Hand Wheel	1	WCB
6	Gear Box	1	FC200	13	Tightening Bolt	4	SUS304,SCM3
7	Gear Box Cap	1	FC200				

Torque Values (1kgf/m=9.8N.m)

BF-V'S Size	Torque Under Without Any Water Pressure (Kgf/m)	Under Water Testing Pressure(Kg/cm ²)			BF-V'S Size	Torque Under Without Any Water Pressure (Kgf/m)	Under Water Testing Pressure(Kg/cm ²)		
		Water Pressure(Kgf/cm ²)	Open Torque(Kgf/m)	Close Torque(Kgf/m)			Water Pressure(Kgf/cm ²)	Open Torque(Kgf/m)	Close Torque(Kgf/m)
2"	1.5	15	0.5	0.5	12"	27.0	6	14	18
2-1/2"	1.5	15	0.5	0.5	14"	37.0	6	25	28
3"	2.0	15	1	1.5	16"	42.0	-	-	-
4"	2.0	12	1	1.5	18"	52.0	-	-	-
5"	5.0	12	2.5	4.5	20"	65.0	-	-	-
6"	6.5	12	4	7	24"	76.0	-	-	-
8"	10.0	10	6	8.5					
10"	17.0	8	7	10					



DN50~DN200

DIMENSIONS TABLE

Nom. Size DN(inch)	JIS														Unit: mm		
	D1	D2	D3	n	øe	L	L1	H1	H2	H3	K	L2	L3	D4	Test Press (kgf/cm ²)		Working Press (kgf/cm ²)
															Body	Seat	
50(2")	55	120	164	4	19	36.1	43.5	82	107	66	132	44	125	150	15.0	12.0	10.0
65(2-1/2")	69.6	140	185	4	19	40	46.4	92	115	66	132	44	125	150	15.0	12.0	10.0
80(3")	78	150	196	8	19	40	47.4	98	123	66	132	44	125	150	15.0	12.0	10.0
100(4")	100	175	225	8	19	48	52.4	112.5	139.5	66	132	44	125	150	15.0	12.0	10.0
125(5")	128	210	254	8	23	52.2	58.8	127	160	66	132	44	125	150	15.0	12.0	10.0
150(6")	152	240	286	8	23	51	57	143	178	66	132	44	125	150	15.0	12.0	10.0
200(8")	200	290	344	12	26	61	67.5	172	212	108	175	95	162	180	15.0	12.0	10.0

Nom. Size DN(inch)	ANSI														Unit: inch		
	D1	D2	D3	n	øe	L	L1	H1	H2	H3	K	L2	L3	D4	Test Press (lb/in ²)		Working Press (lb/in ²)
															Body	Seat	
50(2")	2.16	4.75	6.46	4	0.75	1.42	1.71	3.23	4.21	2.60	5.20	1.732	4.92	5.91	235	180	150
65(2-1/2")	2.74	5.5	7.28	4	0.75	1.57	1.83	3.62	4.53	2.60	5.20	1.732	4.92	5.91	235	180	150
80(3")	3.07	6.0	7.72	4	0.75	1.57	1.87	3.86	4.84	2.60	5.20	1.732	4.92	5.91	235	180	150
100(4")	3.94	7.5	8.85	8	0.75	1.89	2.06	4.43	5.49	2.60	5.20	1.732	4.92	5.91	235	180	150
125(5")	5.04	8.5	10.0	8	0.87	2.02	2.31	5.00	6.30	2.60	5.20	1.732	4.92	5.91	235	180	150
150(6")	5.98	9.5	11.26	8	0.87	2.01	2.24	5.63	7.00	2.60	5.20	1.732	4.92	5.91	235	180	150
200(8")	7.87	11.75	13.54	8	1.02	2.4	2.66	6.77	8.35	4.25	6.89	3.74	6.38	7.09	235	180	150

Nom. Size DN(inch)	DIN														Unit: mm		
	D1	D2	D3	n	øe	L	L1	H1	H2	H3	K	L2	L3	D4	Test Press (bar)		Working Press (bar)
															Body	Seat	
50(2")	55	125	164	4	18	36.1	43.5	82	107	66	132	44	125	150	15.0	12.0	10.0
65(2-1/2")	69.6	145	185	4	18	40	46.4	92	115	66	132	44	125	150	15.0	12.0	10.0
80(3")	78	160	196	8	18	40	47.4	98	123	66	132	44	125	150	15.0	12.0	10.0
100(4")	100	180	225	8	18	48	52.4	112.5	139.5	66	132	44	125	150	15.0	12.0	10.0
125(5")	128	210	254	8	18	51.2	58.8	127	160	66	132	44	125	150	15.0	12.0	10.0
150(6")	152	240	286	8	23	51	57	143	178	66	132	44	125	150	15.0	12.0	10.0
200(8")	200	295	344	8	26	61	67.5	172	212	108	175	95	162	180	15.0	12.0	10.0

※ Standard dimensions based on PVC material.
The flanged length tolerance is according to EN558-1:1995.
※ L: The suggested length of the valve as installed on pipeline.



BUTTERFLY VALVE GEAR OPER. FULL FLANGED TYPE



BF Series

BF 300 Size: 8" - 24"

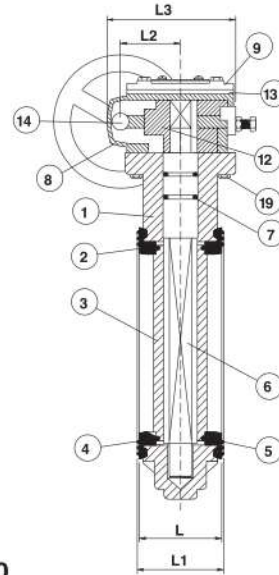
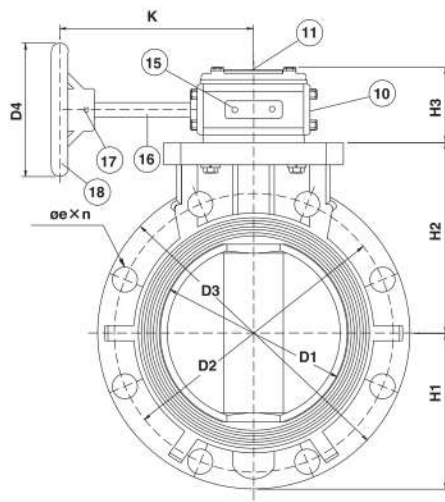
*OPTION: 8"(DN200)Lever type.

● MATERIALS OF CONSTRUCTION

No.	Parts	Pcs.	Materials	No.	Parts	Pcs.	Materials
1	Body	1	UPVC, PP,CPVC, PPG, PVDF	11	Indicator Plate	1	UPVC
2	Seat	1	EPDM, VITON, NBR, HYPALON	12	Gear	1	FCD45
3	Disc	1	UPVC, PP,CPVC, PPG, PVDF	13	Oil Seal	1	EPDM
4	Disc O'ring(A)	2	EPDM, VITON	14	Bearing	1	SMCM220/420/810
5	Disc O'ring(B)	2	EPDM, VITON	15	Adjustable Bolt	2	SS41
6	Stem	1	SUS410, SUS304, SUS316	16	Gearing	1	SS41
7	Stem O'ring	2	EPDM, VITON	17	Set Pin	1	K7
8	Gear Box	1	FC25	18	Hand Wheel	1	FCD45
9	Gear Box Cap	1	FC25	19	Tightening Bolt	4	SCM3,SUS304
10	Side Cap	1	FC25				

● Torque Values (1kgf/m=9.8N.m)

BF-V'S Size	Torque Under Without Any Water Pressure (Kgf/m)	Under Water Testing Pressure(Kg/cm ²)			BF-V'S Size	Torque Under Without Any Water Pressure (Kgf/m)	Under Water Testing Pressure(Kg/cm ²)		
		Water Pressure(Kgf/cm ²)	Open Torque(Kgf/m)	Close Torque(Kgf/m)			Water Pressure(Kgf/cm ²)	Open Torque(Kgf/m)	Close Torque(Kgf/m)
2"	1.5	15	0.5	0.5	12"	27.0	6	14	18
2-1/2"	1.5	15	0.5	0.5	14"	37.0	6	25	28
3"	2.0	15	1	1.5	16"	42.0	-	-	-
4"	2.0	12	1	1.5	18"	52.0	-	-	-
5"	5.0	12	2.5	4.5	20"	65.0	-	-	-
6"	6.5	12	4	7	24"	76.0	-	-	-
8"	10.0	10	6	8.5					
10"	17.0	8	7	10					



DN200~DN600

● DIMENSIONS TABLE

JIS															Unit: mm		
Nom. Size DN(inch)	D1	D2	n	øe	D3	L	L1	H1	H2	H3	K	L2	L3	D4	Test Press (kg/cm ²)		Working Press (kg/cm ²)
															Body	Seat	
200(8")	203	290	12	23	348	82	87	174	2112	108	175	51	136	180	15.0	12.0	10.0
250(10")	255	355	12	25	412	102	108	206	2427	83	195	51	136	180	15.0	12.0	10.0
300(12")	312	400	16	25	493	120	126	247	289	110	210	72	189	305	12.0	10.0	8.0
350(14")	355	445	16	25	540	123	129	270	305	110	210	72	189	305	10.5	8.5	7.0
400(16")	398	510	16	27	615	163	170	307.5	353	130	330	72	189	356	9.0	7.0	6.0
450(18")	451	565	20	27	640	175	182	325	365	130	330	116	285	406	9.0	6.0	5.0
500(20")	500	620	20	27	730	183	190	373	405	130	330	116	285	457	9.0	6.0	5.0
600(24")	600	730	24	33	844	205	218	435	460	175	350	116	285	508	7.5	6.0	5.0

ANSI															Unit: inch		
Nom. Size DN(inch)	D1	D2	n	øe	D3	L	L1	H1	H2	H3	K	L2	L3	D4	Test Press (lb/in ²)		Working Press (lb/in ²)
															Body	Seat	
200(8")	7.99	11.75	8	0.88	13.70	3.23	3.43	6.85	8.31	4.25	6.89	2.01	5.35	7.09	225	180	150
250(10")	10	14.25	12	0.98	16.22	4.02	4.25	8.11	9.56	3.27	7.68	2.01	5.35	7.09	225	180	150
300(12")	12.28	17.00	12	0.98	19.41	4.72	4.96	9.72	11.38	4.33	8.27	2.83	7.44	12.01	180	150	120
350(14")	13.97	18.75	12	1.14	21.26	4.84	5.08	10.63	12.01	4.33	8.27	2.83	7.44	12.01	155	125	105
400(16")	15.69	21.25	16	1.14	24.21	6.42	6.69	12.11	13.90	5.12	12.99	2.83	7.44	14.02	133	100	88
450(18")	17.75	22.75	16	1.26	25.20	6.89	7.17	12.80	14.37	5.12	12.99	4.57	11.22	15.98	133	90	75
500(20")	19.70	25.00	20	1.26	28.74	7.20	7.48	14.69	15.94	5.12	12.99	4.57	11.22	17.99	133	90	75
600(24")	23.66	29.50	20	1.38	33.23	8.07	8.58	17.13	18.11	6.89	13.78	4.57	11.22	20.00	111	90	75

DIN															Unit: mm		
Nom. Size DN(inch)	D1	D2	n	øe	D3	L	L1	H1	H2	H3	K	L2	L3	D4	Test Press (bar)		Working Press (bar)
															Body	Seat	
200(8")	203	295	8	23	348	82	87	174	211.2	108	175	51	136	180	15.0	12.0	10.0
250(10")	255	350	12	25	412	102	108	206	242.7	83	195	51	136	180	15.0	12.0	10.0
300(12")	312	400	12	25	493	120	126	247	289	110	210	72	189	305	12.0	10.0	8.0
350(14")	355	460	16	25	540	123	129	270	305	110	210	72	189	305	10.5	8.5	7.0
400(16")	398	515	16	27	615	163	170	307.5	363	130	330	72	189	356	9.0	7.0	6.0
450(18")	451	565	20	27	640	175	182	325	365	130	330	116	285	406	9.0	6.0	5.0
500(20")	500	620	20	27	730	183	190	373	405	130	330	116	285	457	9.0	6.0	5.0
600(24")	600	725	20	30	844	205	218	435	460	175	350	116	285	508	7.5	6.0	5.0

※ Standard dimensions based on PVC material.
The flanged length tolerance is according to EN558-1:1995.
※ L: The suggested length of the valve as installed on pipeline.



PNEUMATIC ACTUATED BUTTERFLY VALVE (DOUBLE ACTION TYPE)



BM Series

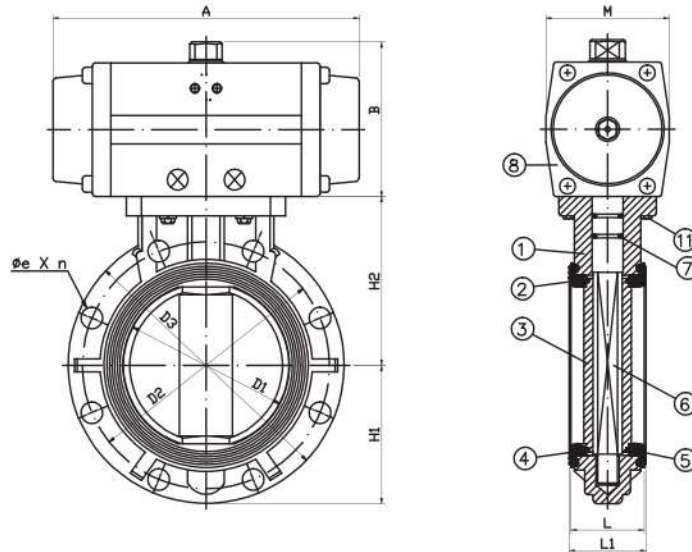
BM300 Size: 2"- 24"

● MATERIALS OF CONSTRUCTION

No.	Parts	Pcs.	Materials
1	Body	1	UPVC, PP, CPVC, PPG, PVDF
2	Seat	1	EPDM,VITON, NBR, HYPALON
3	Disc	1	UPVC, PP, CPVC, PPG, PVDF
4	Disc O'ring(A)	2	EPDM,VITON
5	Side O'ring(B)	2	EPDM,VITON
6	Stem	1	SUS410/304/316
7	Stem O'ring	2	EPDM,VITON
8	Control Actuator	1	
9	Mounting Bracket	1	SUS304
10	Coupling	1	ZINC,PLATED,CARBON STEEL

● DIMENSIONS TABLE

Nom-Size DN (inch)	JIS												Unit: mm		
	D1	D2	D3	e	n No. of holes	L	L1	H1	H2	A	B	M	Test Press (kgf/cm ²)		Working Press (kgf/cm ²)
													Body	Seat	
50(2")	55	120	164	18	4	36.1	43.5	82	107	138	87	75	15.0	12.0	10.0
65(2-1/2")	69.6	140	185	18	4	40	46.4	92	115	155.5	103	75	15.0	12.0	10.0
80(3")	78	150	196	18	8	40	47.4	98	123	210	120	86	15.0	12.0	10.0
100(4")	100	175	225	18	8	48	52.4	112.5	139.5	210	120	86	15.0	12.0	10.0
125(5")	128	210	254	23	8	51.2	58.8	127	160	228	130	94	15.0	12.0	10.0
150(6")	152	240	286	23	8	51	57	143	178	280.5	145	120	15.0	12.0	10.0
200(8")	200	290	344	23	12	61	67.5	172	212	362	185	141	15.0	12.0	10.0
250(10")	255	350	412	23	12	102	108	206	242.7	362	185	176	15.0	12.0	10.0
300(12")	312	400	493	23	12	120	126	247	289	462	246	176	10.5	8.5	7.0
350(14")	355	445	540	23	16	123	129	270	305	462	246	220	10.5	8.5	7.0
400(16")	398	510	615	27	16	163	170	307.5	353	575	290	220	9.0	7.0	6.0
450(18")	451	565	640	27	20	175	182	325	365				7.5	6.0	5.0
500(20")	500	620	730	27	20	183	190	373	405				5.0	4.0	3.5
600(24")	600	730	844	33	24	205	218	435	460				5.0	4.0	3.5



DN50~DN600

DIMENSIONS TABLE

Nom-Size DN (inch)	ANSI												Unit: inch		
	D1	D2	D3	e	n No. of holes	L	L1	H1	H2	A	B	M	Test Press (lb/in ²)		Working Press (lb/in ²)
													Body	Seat	
50(2")	2.16	4.75	6.46	0.75	4	1.42	1.71	3.23	4.21	5.433	3.425	2.953	225	180	150
65(2-1/2")	2.74	5.50	7.28	0.75	4	1.57	1.83	3.62	4.53	6.122	4.055	2.953	225	180	150
80(3")	3.07	6.00	7.72	0.75	4	1.57	1.83	3.86	4.84	8.268	4.724	3.386	225	180	150
100(4")	3.94	7.50	8.85	0.75	8	1.89	2.06	4.43	5.49	8.268	4.724	3.386	225	180	150
125(5")	5.04	8.50	10.0	0.87	8	2.02	2.31	5.00	6.30	8.976	5.118	3.70	225	180	150
150(6")	5.98	9.50	11.26	0.87	8	2.01	2.24	5.63	7.00	11.043	5.71	4.724	225	180	150
200(8")	7.87	11.75	13.54	0.87	8	2.40	2.66	6.77	8.35	14.25	7.283	5.55	225	180	150
250(10")	10.00	14.25	16.22	0.98	12	4.02	4.25	8.11	9.56	14.25	7.283	6.93	225	180	150
300(12")	12.28	17.00	19.41	0.98	12	4.72	4.96	9.72	11.38	18.19	9.685	6.93	155	125	105
350(14")	13.97	18.75	21.26	1.14	12	4.84	5.08	10.63	12.01	18.19	9.685	8.66	155	125	105
400(16")	15.69	21.25	24.21	1.14	16	6.42	6.69	12.11	13.90	22.64	11.42	8.66	133	100	89
450(18")	17.75	22.75	25.20	1.26	16	6.89	7.17	12.80	14.37				110	89	75
500(20")	19.70	25.00	28.74	1.26	20	7.20	7.48	14.69	15.94				75	60	52
600(24")	23.66	29.50	32.23	1.38	20	8.07	8.58	17.13	18.11				75	60	52

Nom-Size DN (inch)	DIN												Unit: mm		
	D1	D2	D3	e	n No. of holes	L	L1	H1	H2	A	B	M	Test Press (bar)		Working Press (bar)
													Body	Seat	
50(2")	55	125	164	18	4	36.1	43.5	82	107	138	87	75	15.0	12.0	10.0
65(2-1/2")	69.6	145	185	18	4	40.0	46.4	92	115	155.5	103	75	15.0	12.0	10.0
80(3")	78	160	196	18	8	40.0	47.4	98	123	210	120	86	15.0	12.0	10.0
100(4")	100	180	225	18	8	48.0	52.4	112.5	139.5	210	120	86	15.0	12.0	10.0
125(5")	128	210	254	23	8	51.2	58.8	127	160	228	130	94	15.0	12.0	10.0
150(6")	152	240	286	23	8	51.0	57.0	143	178	280.5	145	120	15.0	12.0	10.0
200(8")	200	295	344	23	8	61.0	67.5	172	212	362	185	141	15.0	12.0	10.0
250(10")	255	350	412	23	12	102	108	206	242.7	362	185	176	15.0	12.0	10.0
300(12")	312	400	493	23	12	120	126	247	289	462	246	176	10.5	8.5	7.0
350(14")	355	460	540	23	16	123	129	270	305	462	246	220	10.5	8.5	7.0
400(16")	398	515	615	27	16	163	176	307.5	363	575	290	220	9.0	7.0	6.0
450(18")	451	565	640	27	20	175	182	325	365				7.5	6.0	5.0
500(20")	500	620	730	27	20	183	190	373	405				5.0	4.0	3.5
600(24")	600	725	844	30	20	205	218	435	460				5.0	4.0	3.5

✱ Standard dimensions based on PVC material.
 ✱ The flanged length tolerance is according to EN558-1:1995.
 ✱ L: The suggested length of the valve as installed on pipeline.



PNEUMATIC ACTUATED BUTTERFLY VALVE (Spring Return Type)



BN Series

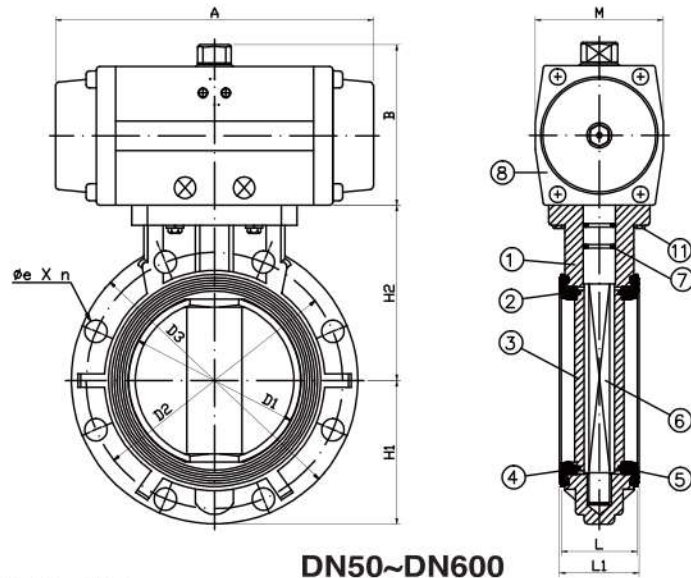
BN300 Size: 2" - 24"

MATERIALS OF CONSTRUCTION

No.	Parts	Pcs.	Materials
1	Body	1	UPVC, PP, PVDF, PPG, CPVC
2	Seat	1	EPDM, VITON, NBR, HYPALON
3	Disc	1	UPVC, PP, PVDF, PPG, CPVC
4	Disc O'ring(A)	2	EPDM, VITON
5	Disc O'ring(B)	2	EPDM, VITON
6	Stem	1	SUS410/304/316
7	Stem O'ring	2	EPDM, VITON
8	Actuator	1	
9	Mounting Bracket	1	SUS304
10	Coupling	1	ZINC, PLATED, CARBON STEEL

DIMENSIONS TABLE

Nom-Size DN (inch)	JIS												Unit: mm		
	D1	D2	D3	e	n No. of holes	L	L1	H1	H2	A	B	M	Test Press (kgf/cm ²)		Working Press (kgf/cm ²)
													Body	Seat	
50(2")	55	120	164	18	4	36.1	43.5	82	107	138	87	75	15.0	12.0	10.0
65(2-1/2")	69.6	140	185	18	4	40.0	46.4	92	115	155.5	103	75	15.0	12.0	10.0
80(3")	78	150	196	18	8	40.0	47.4	98	123	210	120	86	15.0	12.0	10.0
100(4")	100	175	225	18	8	48.0	52.4	112.5	139.5	210	120	86	15.0	12.0	10.0
125(5")	128	210	254	23	8	51.2	58.8	127	160	228	130	94	15.0	12.0	10.0
150(6")	152	240	286	23	8	51	57	143	178	280.5	145	120	15.0	12.0	10.0
200(8")	200	290	344	23	12	61	67.5	172	212	362	185	141	15.0	12.0	10.0
250(10")	255	355	412	23	12	102	108	206	242.7	362	185	176	15.0	12.0	10.0
300(12")	312	400	493	23	12	120	126	247	289	462	246	176	10.5	8.5	7.0
350(14")	355	445	540	23	16	123	129	270	305	462	246	220	10.5	8.5	7.0
400(16")	398	510	615	27	16	163	170	307.5	353	575	290	220	9.0	7.0	6.0
450(18")	451	565	640	27	20	175	182	325	365				7.5	6.0	5.0
500(20")	500	620	730	27	20	183	190	373	405				5.0	4.0	3.5
600(24")	600	730	844	33	24	205	218	435	460				5.0	4.0	3.5



DN50~DN600

DIMENSIONS TABLE

Nom-Size DN (inch)	ANSI												Unit: inch		
	D1	D2	D3	e	n No. of holes	L	L1	H1	H2	A	B	M	Test Press (lb/in ²)		Working Press (lb/in ²)
													Body	Seat	
50(2")	2.16	4.75	6.46	0.75	4	1.42	1.71	3.23	4.21	5.433	3.425	2.953	225	180	150
65(2-1/2")	2.74	5.50	7.28	0.75	4	1.57	1.83	3.62	4.53	6.122	4.055	2.953	225	180	150
80(3")	3.07	6.00	7.72	0.75	4	1.57	1.87	3.86	4.84	8.268	4.724	3.386	225	180	150
100(4")	3.94	7.50	8.85	0.75	8	1.89	2.06	4.43	5.49	8.268	4.724	3.386	225	180	150
125(5")	5.04	8.50	10.0	0.87	8	2.02	2.31	5.00	6.30	8.976	5.118	3.70	225	180	150
150(6")	5.98	9.50	11.26	0.87	8	2.01	2.24	5.63	7.00	11.043	5.71	4.724	225	180	150
200(8")	7.87	11.75	13.54	0.87	8	2.40	2.66	6.77	8.35	14.25	7.283	5.55	225	180	150
250(10")	10.00	14.25	16.22	0.98	12	4.02	4.25	8.11	9.56	14.25	7.283	6.93	225	180	150
300(12")	12.28	17.00	19.41	0.98	12	4.72	4.96	9.72	11.38	18.19	9.685	6.93	155	125	105
350(14")	13.97	18.75	21.26	1.14	12	4.84	5.08	10.63	12.01	18.19	9.685	8.66	155	125	105
400(16")	15.69	21.25	24.21	1.14	16	6.42	6.69	12.11	13.90	22.64	11.42	8.66	133	100	89
450(18")	17.75	22.75	25.20	1.26	16	6.89	7.17	12.80	14.37				110	89	75
500(20")	19.70	25.00	28.74	1.26	20	7.20	7.18	14.69	15.94				75	60	52
600(24")	23.66	29.50	32.23	1.38	20	8.07	8.58	17.13	18.11				75	60	52

Nom-Size DN (inch)	DIN												Unit: mm		
	D1	D2	D3	e	n No. of holes	L	L1	H1	H2	A	B	M	Test Press (bar)		Working Press (bar)
													Body	Seat	
50(2")	55	125	164	18	4	36.1	43.5	82	107	138	87	75	15.0	12.0	10.0
65(2-1/2")	69.6	145	185	18	4	40.0	46.4	92	115	155.5	103	75	15.0	12.0	10.0
80(3")	78	160	196	18	8	40.0	47.4	98	123	210	120	86	15.0	12.0	10.0
100(4")	100	180	225	18	8	48.0	52.4	112.5	139.5	210	120	86	15.0	12.0	10.0
125(5")	128	210	254	23	8	51.2	58.8	127	160	228	130	94	15.0	12.0	10.0
150(6")	152	240	286	23	8	51.0	57.0	143	178	280.5	145	120	15.0	12.0	10.0
200(8")	200	295	344	23	8	61.0	67.5	172	212	362	185	141	15.0	12.0	10.0
250(10")	255	350	412	23	12	102	108	206	242.7	362	185	176	15.0	12.0	10.0
300(12")	312	400	493	23	12	120	126	247	289	462	246	176	10.5	8.5	7.0
350(14")	355	460	540	23	16	123	129	270	305	462	246	220	10.5	8.5	7.0
400(16")	398	515	615	27	16	163	170	307.5	363	575	290	220	9.0	7.0	6.0
450(18")	451	565	640	27	20	175	182	325	365				7.5	6.0	5.0
500(20")	500	620	730	27	20	183	190	373	405				5.0	4.0	3.5
600(24")	600	725	844	30	20	205	218	435	460				5.0	4.0	3.5

※ Standard dimensions based on PVC material.
 ※ The flanged length tolerance is according to EN558-1:1995.
 ※ L: The suggested length of the valve as installed on pipeline.



BUTTERFLY VALVE (ELECTRIC ACTUATED TYPE)



BP Series

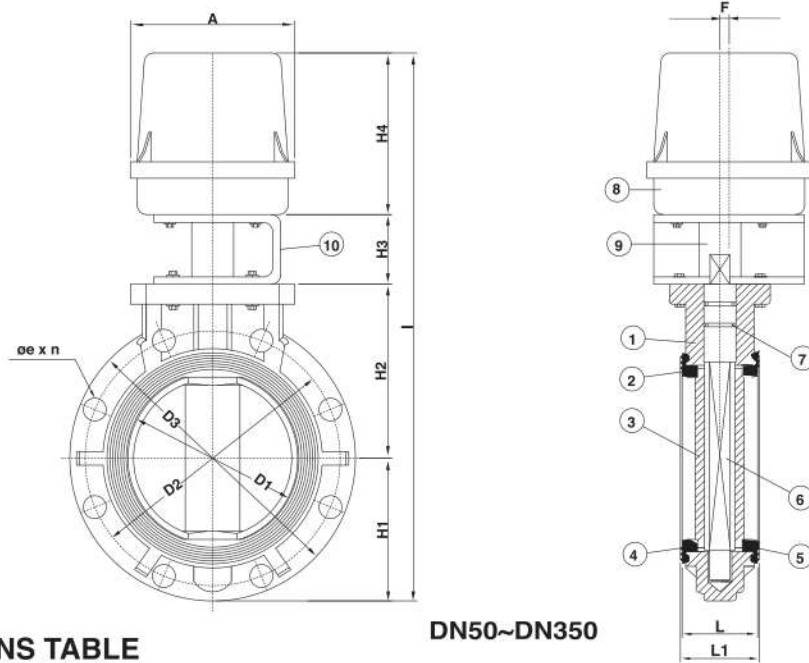
BP300 Size: 2"- 14"

Features of the Product:

1. Low horse power, low power consumption, big torsion power can be cut off automatically when control angle has been reached. It maintains at the condition of no power consumption to save energy and to reduce cost for conforming to AC110V, 220V single phase, AV 220V, 380V, 440V, 3 phase power supply.
2. They are simple, lightweight and compact, and are ideal for use where either space is limited or service and maintenance must be performed quickly. Because they require only 90 to fully open or close. Shie Yu Butterfly Valves are easily automated and are widely used as efficient throttling or flow regulating valves. Additionally, they are excellent for handling abrasive or slurry-type fluids. Of course, they are acid & alkali proof and anti-corrosion.
3. Starting speed is very stable and moisture in the pipeline can be discharged so that the service life of the pipe is increasing. The motor is equipped with temperature Protection switching valve to enable it not to be burnt out even seized with substance.
4. Various models are available for the choice of the customers. Manual control model and non-manual control model are also workable upon power outage, it can be switched manually. It is simple design with less fitting accessories. One electric wire can complete automatic control in order to save workmanship, materials, and money for the customers to attain the goal for automation.

● MATERIALS OF CONSTRUCTION

No.	Parts	Pcs.	Materials	No.	Parts	Pcs.	Materials
1	Body	1	UPVC, PP, PVDF, CPVC, PPG	6	Stem	1	SUS410/304/316
2	Seat	1	EPDM, VITON, NBR, HYPALON	7	Stem O'ring	2	EPDM, VITON
3	Disc	1	UPVC, PP, PVDF, CPVC, PPG	8	Electric Actuator	1	
4	Disc O'ring(A)	2	EPDM, VITON	9	Mounting Bracket	1	SUS304
5	Disc O'ring(B)	2	EPDM, VITON	10	Coupling	1	ZINC PLATED, CARBON STEEL



DN50~DN350

● DIMENSIONS TABLE

JIS															Unit: mm			
Nom. Size DN(inch)	D1	D2	D3	e	n No. of holes	L	L1	H1	H2	H3	H4	I	A	F	Test Press (kg/cm ²)		Working Press (kg/cm ²)	Allowed Voltage (W/A)
															Body	Seat		
50(2")	55	120	164	19	4	36.1	43.3	82	107	61	145	391	150	28	15.0	12.0	10.0	110/220
65(2-1/2")	69.6	140	185	19	4	40	46.4	92	115	61	145	408	150	28	15.0	12.0	10.0	110/220
80(3")	78	150	196	19	8	40	47.4	98	123	61	145	424	150	28	15.0	12.0	10.0	110/220
100(4")	100	175	225	19	8	48	52.4	112.5	139.5	61	145	455	150	28	15.0	12.0	10.0	110/220
125(5")	128	210	254	23	8	51.2	58.8	127	160	61	145	493	150	28	15.0	12.0	10.0	110/220
150(6")	152	240	286	23	8	51	57.0	143	178	71	200	593	190	23	15.0	12.0	10.0	110/220
200(8")	200	290	344	23	12	61	67.5	172	212	71	200	643	190	23	15.0	12.0	10.0	110/220
250(10")	255	350	412	25	12	102	108	206	242.7	71	200	706	190	23	15.0	12.0	10.0	110/220
300(12")	312	400	493	25	16	120	126	247	289	71	200	799	190	23	10.5	8.5	7.0	110/220
350(14")	355	460	540	25	16	123	129	270	305	71	200	835	190	23	10.5	8.5	7.0	110/220

ANSI															Unit: inch			
Nom. Size DN(inch)	D1	D2	D3	e	n No. of holes	L	L1	H1	H2	H3	H4	I	A	F	Test Press (kg/cm ²)		Working Press (lb/in ²)	Allowed Voltage (W/A)
															Body	Seat		
50(2")	2.16	4.75	6.46	0.75	4	1.42	1.71	3.23	4.21	2.36	5.71	15.39	5.91	1.10	225	180	150	110/220
65(2-1/2")	2.74	5.50	7.28	0.75	4	1.57	1.83	3.62	4.53	2.36	5.71	16.06	5.91	1.10	225	180	150	110/220
80(3")	3.07	6.00	7.72	0.75	4	1.57	1.87	3.86	4.84	2.36	5.71	16.69	5.91	1.10	225	180	150	110/220
100(4")	3.94	7.50	8.85	0.75	8	1.89	2.06	4.43	5.49	2.36	5.71	17.91	5.91	1.10	225	180	150	110/220
125(5")	5.04	8.50	10.00	0.87	8	2.02	2.31	5.00	6.30	2.36	5.71	19.41	5.91	1.10	225	180	150	110/220
150(6")	5.98	9.50	11.26	0.87	8	2.01	2.24	5.63	7.00	2.80	7.87	23.35	7.48	0.91	225	180	150	110/220
200(8")	7.87	11.75	13.54	0.87	8	2.40	2.66	6.77	8.35	2.80	7.87	35.31	7.48	0.91	225	180	150	110/220
250(10")	10.00	14.25	16.22	0.98	12	4.02	4.25	7.87	9.25	2.80	7.87	27.79	7.48	0.91	225	180	150	110/220
300(12")	12.28	17.00	19.41	0.98	12	4.72	4.96	9.41	11.38	2.80	7.87	31.46	7.48	0.91	155	125	105	110/220
350(14")	13.976	18.75	21.26	1.14	12	4.84	5.08	10.20	12.01	2.80	7.87	32.87	7.48	0.91	155	125	105	110/220

DIN															Unit: mm			
Nom. Size DN(inch)	D1	D2	D3	e	n No. of holes	L	L1	H1	H2	H3	H4	I	A	F	Test Press (bar)		Working Press (bar)	Allowed Voltage (W/A)
															Body	Seat		
50(2")	55	125	164	18	4	36.1	43.5	82	107	61	145	391	150	28	15.0	12.0	10.0	110/220
65(2-1/2")	69.6	145	185	18	4	40.0	46.4	92	115	61	145	408	150	28	15.0	12.0	10.0	110/220
80(3")	78	160	196	18	8	40.0	47.4	98	123	61	145	424	150	28	15.0	12.0	10.0	110/220
100(4")	100	180	225	18	8	48.0	52.4	112.5	139.5	61	145	455	150	28	15.0	12.0	10.0	110/220
125(5")	128	210	254	18	8	51.2	58.8	127	160	61	145	493	150	28	15.0	12.0	10.0	110/220
150(6")	152	240	286	23	8	51	57.0	143	178	71	200	593	190	23	15.0	12.0	10.0	110/220
200(8")	200	295	344	23	8	61	67.5	172	212	71	200	643	190	23	15.0	12.0	10.0	110/220
250(10")	255	350	412	23	12	102	108	206	242.7	71	200	706	190	23	15.0	12.0	10.0	110/220
300(12")	312	400	493	23	12	120	126	247	289	71	200	799	190	23	10.5	8.5	7.0	110/220
350(14")	355	460	540	23	16	123	129	270	305	71	200	835	190	23	10.5	8.5	7.0	110/220

Standard dimensions based on PVC material.
 ✱ The flanged length tolerance is according to EN558-1:1995.
 ✱ L: The suggested length of the valve as installed on pipeline.